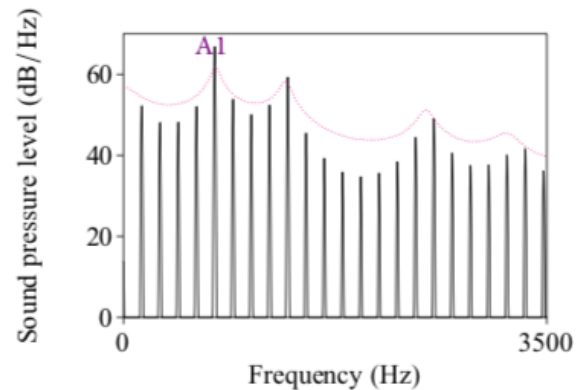
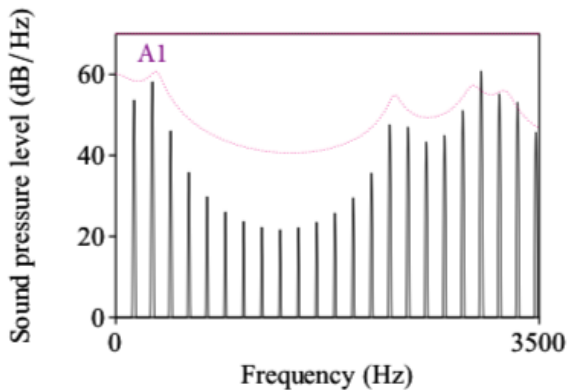
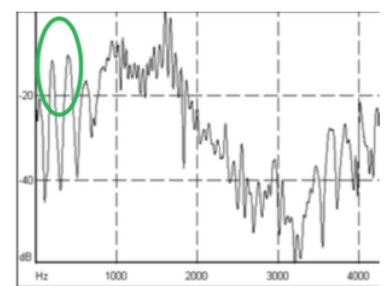
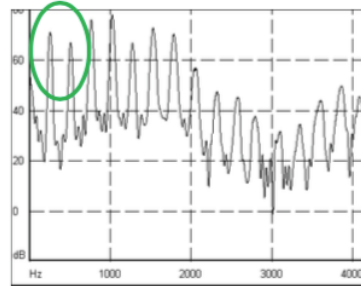
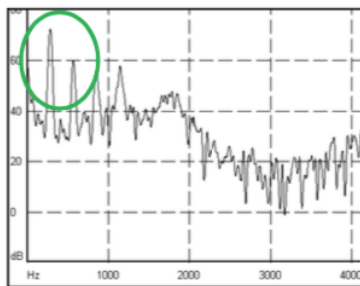


LING 716, Class 2.1 (Sep 10, 2019) Review questions: Spectrum practice

- Consider the two spectra shown below (Garellek 2019). Describe the vowel quality corresponding to each spectrum. For each spectrum, label H1 through H4 and estimate:
 - f_0
 - F1
 - F2
 - H1
 - A1
 - A2
 - H1-H2
 - H1-A1
 - H2-H4



- Estimate H1-H2 for each of the following three spectra of [ba] (Keating 2016 LSA slides). Based on your estimates, which do you think is breathy, which one is modal, and which one is creaky? Is knowing H1-H2 enough information to determine this? How would you transcribe the three sounds in IPA?



- In Praat, create synthetic [a], [i], and [u] vowels with $f_0 = 440$ Hz. Take spectra of each of these. Based on your observations of the spectra, explain why using [a] for stimuli in voice quality production studies helps to control non-laryngeal effects.
- Record some vowels while trying to produce different voice qualities. Look at spectra and waveforms. Let's do the same for some of the Laver recordings (Box folder, 2/laver/).